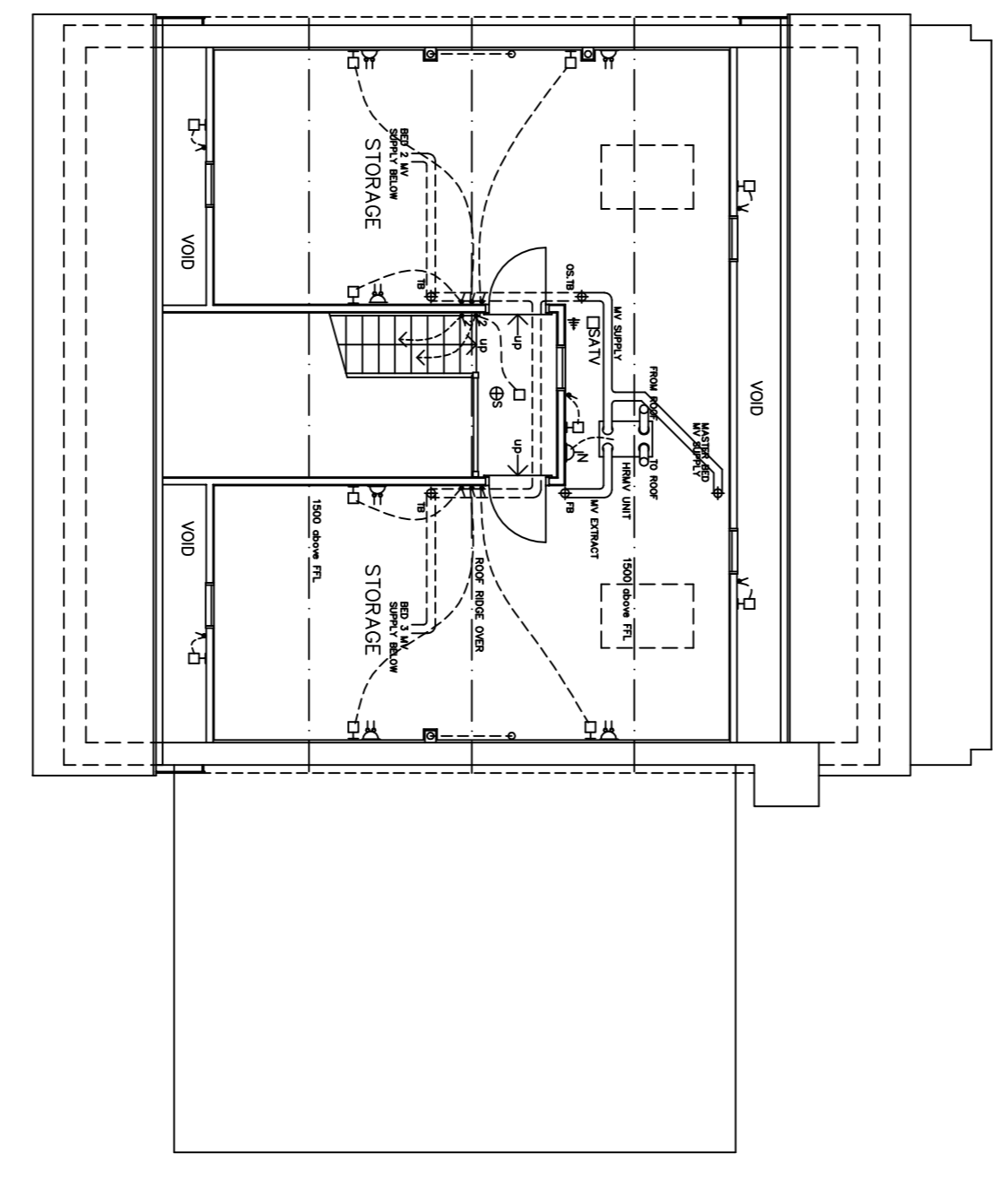
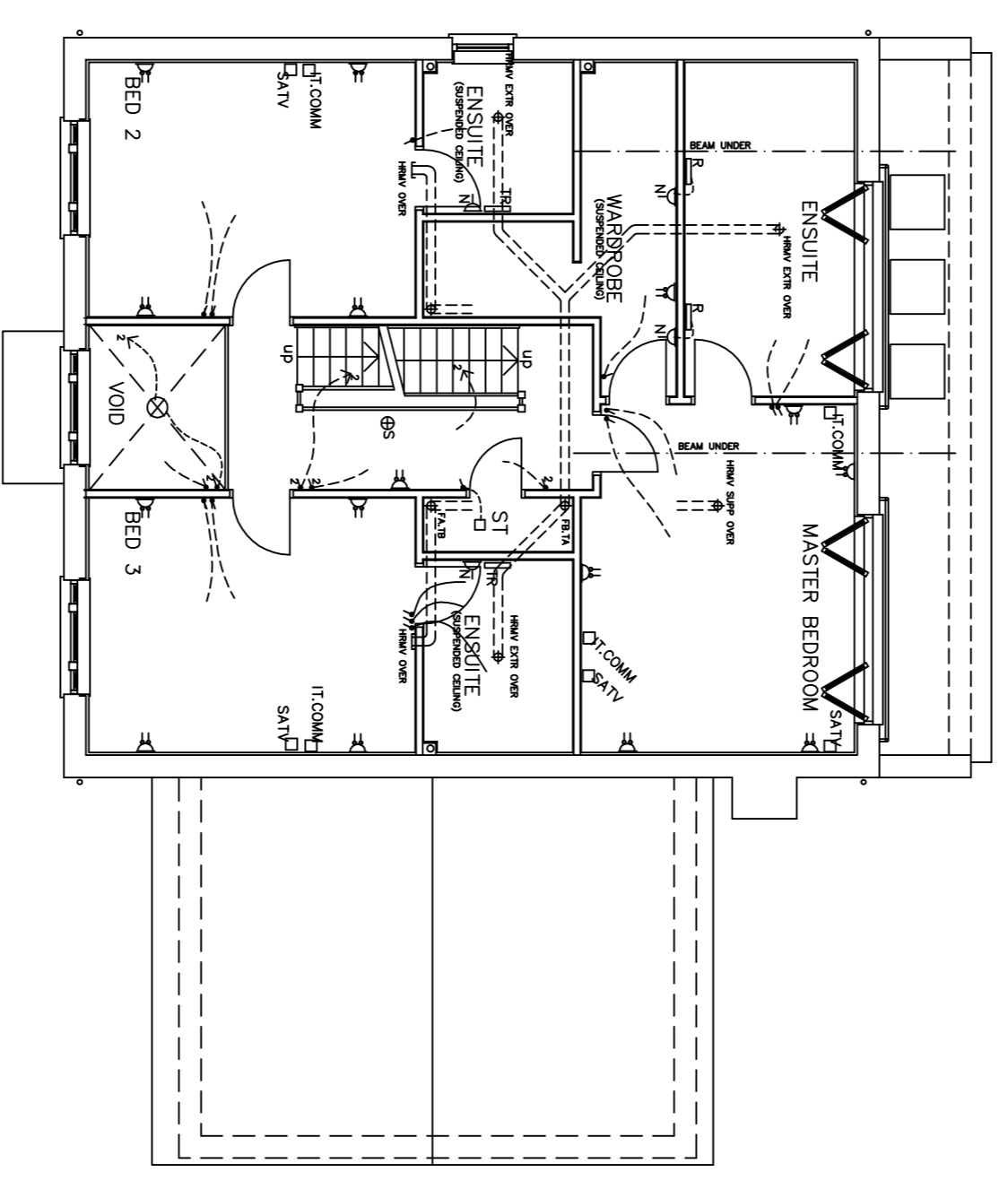
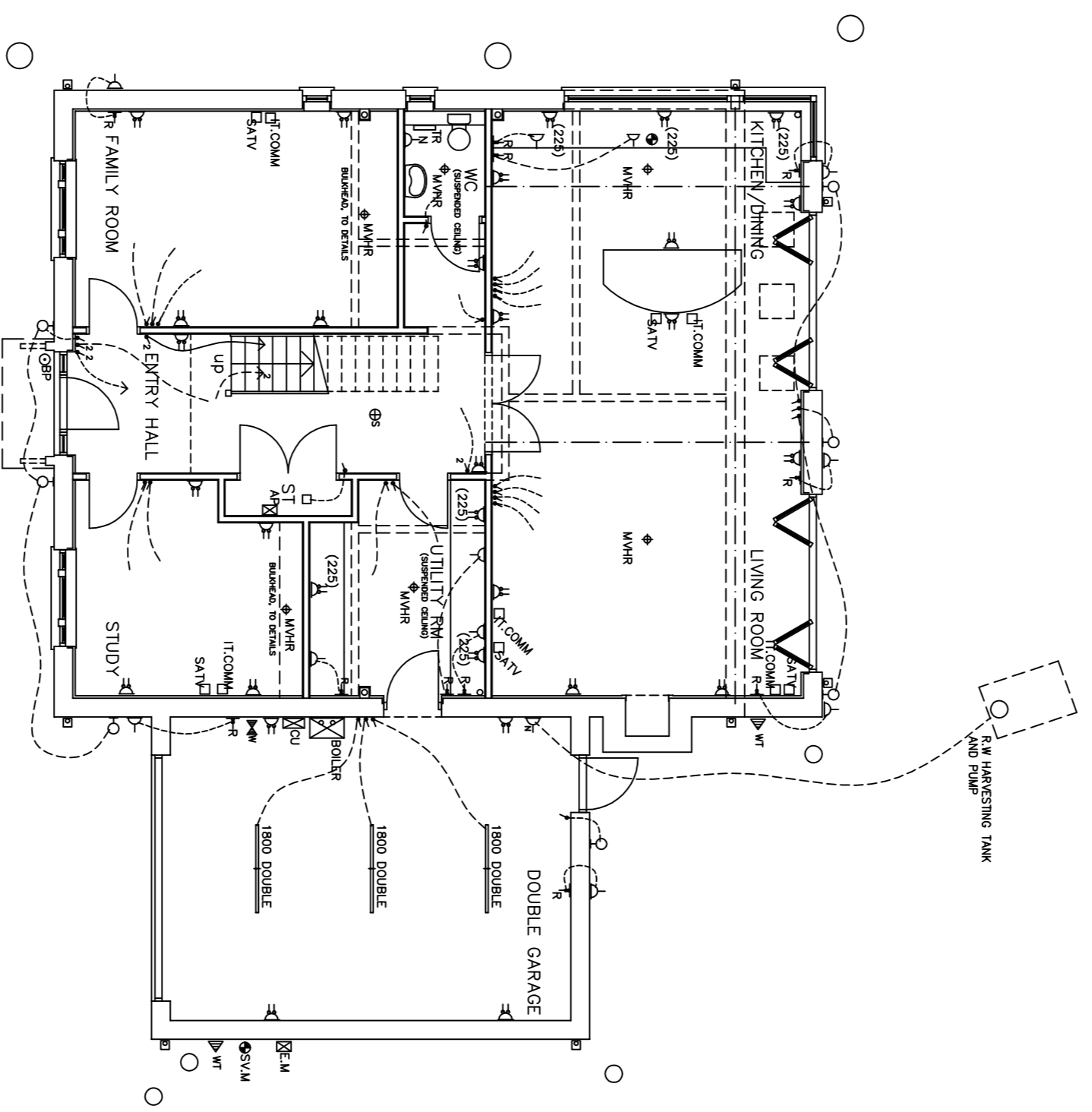


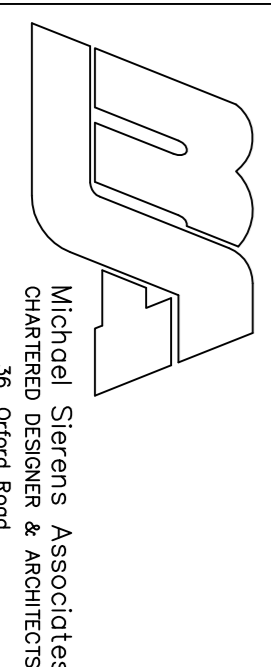
NOTES
 THIS DRAWING TO BE READ IN CONJUNCTION WITH ALL CONTRACT DOCUMENTS AND SPECIFICATIONS.
 PLAN & SECTION SETTING OUT OF BUILDING TO BE CHECKED BY CONTRACTOR PRIOR TO COMMENCEMENT OF WORKS AND DISCREPANCIES TO BE VERIFIED WITH THE CLIENT/ARCHITECT.
 THE CONTRACTOR SHALL BE RESPONSIBLE FOR OBTAINING ALL NECESSARY PERMITS AND APPROVALS.
 REFER TO BMS DRAINAGE DRAWINGS FOR DETAILS
 REFER TO SEPARATE WRITTEN CONSTRUCTION NOTES AND TREE PROTECTION REPORT



- KEY TO SYMBOLS
- LIGHT POINT/PUNCTURE SEALED FITTING IN BATHROOMS (W-WET)
 - WALK-MOUNTED LIGHT POINT
 - SINGLE FLOURESCENT TUBE (SIZE AS INDICATED)
 - COMPACT FLOURESCENT (CB)
 - LIGHT SWITCH (1300 MM ABOVE F.F. TO TOP OF SWITCH)
 - 2-WAY LIGHT SWITCH
 - 3-WAY LIGHT SWITCH
 - SWITCHED FUSED SPUR WITH NEON LIGHT
 - SINGLE SWITCHED SOCKET OUTLET (DIMENSIONS TO C/O OF OUTLET)
 - DOUBLE SWITCHED SOCKET OUTLET (DIMENSIONS AS SHOWN)
 - BLENDED OR FINGER OUTLET
 - SHOWER S.O. & LIGHT
 - BELLS PUSH & POWER/TRANSFORMER
 - ELECTRICAL FAN WITH FUSED SPUR (DIMENSIONS TO C/O OF OUTLET)
 - RADIATOR (TR-HOME RAD)
 - ELECTRICITY CONSUMER UNIT
 - ELECTRICITY METER
 - SECURITY ALARM PANEL
 - WATER METERS
 - GAS STOP-VALVE
 - GAS STOP-VALVE & METER
 - COOKER CONTROL PANEL
 - BOILER
 - SHAKE ALARM/DETECTOR
 - SHAVE SHED
 - DRIVE CABLE TV
 - DOWN-LIGHT
 - TV AERIAL POINT/ROUTE
- ALSO REFER TO SPECIFICATIONS AND NOTES
 FOR WATER CONTROLS, THERMOSTATS ETC.
 THESE NOTES ARE FOR INFORMATION ONLY
 DO NOT SCALE THE DRAWING
 ALL LIGHT FITTINGS TO BE INSTALLED IN ACCORDANCE WITH THE LIGHTING DESIGN DOCUMENTS
 ALL DIMENSIONS TO FACE UNLESS OTHERWISE STATED
 ALL DIMENSIONS TO FACE UNLESS OTHERWISE STATED
 ALL DIMENSIONS TO FACE UNLESS OTHERWISE STATED
 ALL DIMENSIONS TO FACE UNLESS OTHERWISE STATED
 REFER TO INTERIOR DESIGNERS LAYOUTS FOR INTERNAL LIGHTING

revision	description	date

PROJECT
 MILL LODGE, MILL LANE
 SEWARDSTONE, E4 7RB
 SERVICES LAYOUTS



drawing no.	09.364.26
revision	
date	Apr 2011
drawn by	
checked	
scale	1:50 @ A1

